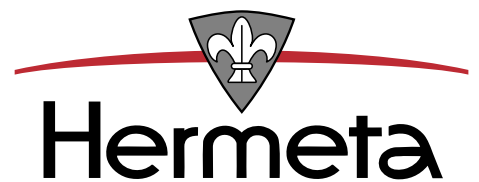


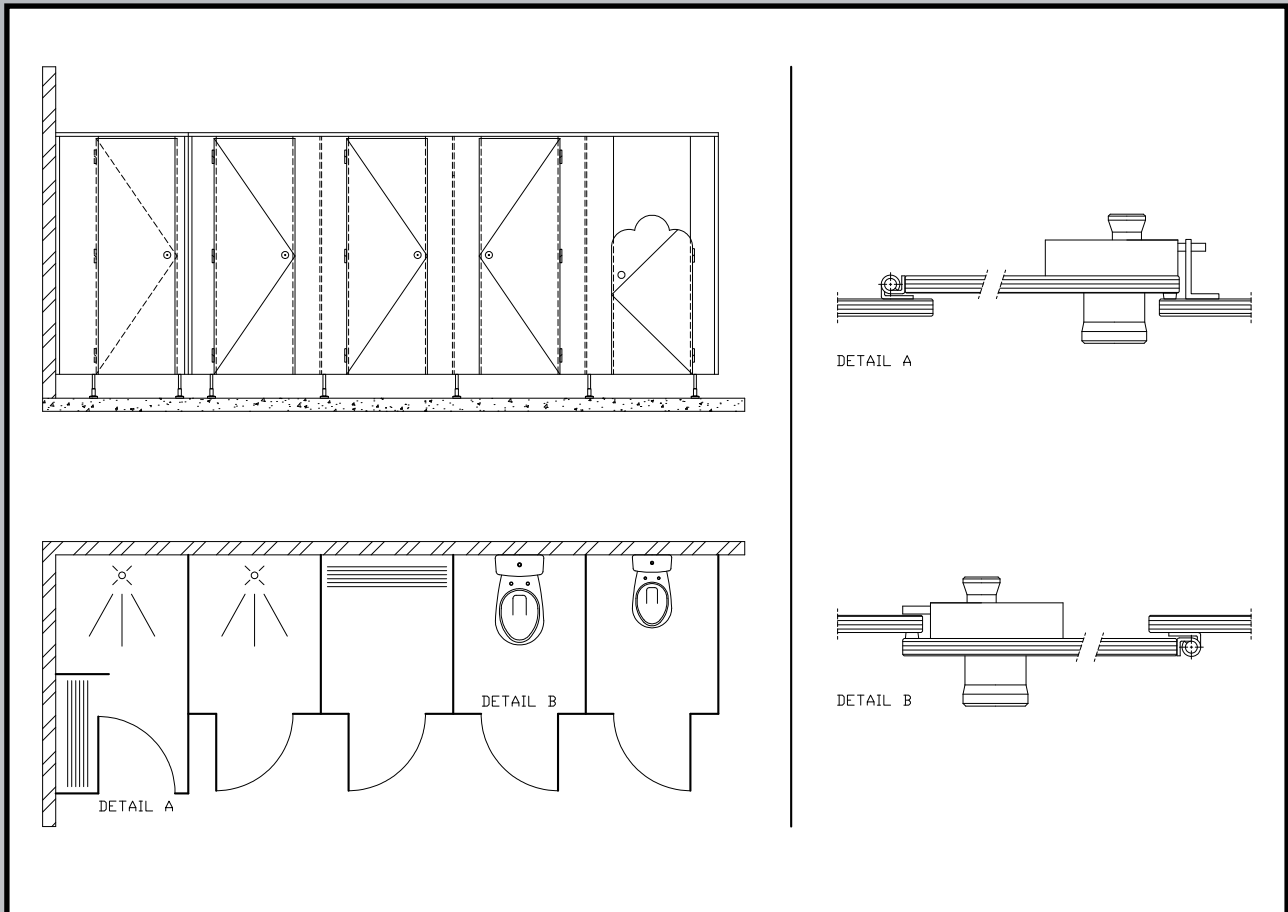
# HerboKern Solid

HerboKern Solid toilet, shower and changing cubicles, timeless in every sense. Many years of experience and endurance. In a timeless design with self closing doors.



Cubicles made of high pressure solid grade laminate, colourfast, scratch and dirt resistant without redundant details. With maintenance free aluminium and stainless steel fastenings. Matching rebated doors. Free hanging or on adjustable feet, in different heights. Flexible in dimensions and accessories. Designed for intensively used wet bathroom and changing areas.

# HerboKern Solid | *technical specifications*



## HerboKern Solid

Doors	: rebated
Material	: 13 mm high pressure solid grade laminate
Hinges	: 3 stainless steel AISI-316 grade rising hinges
Door knob	: aluminium round knob with locking assembly and free/occupied indication
Cubicle height	: approx. 2000 mm*), with 180 mm free space above f.l.l.
Version	: on aluminium adjustable feet
Connection profile	: aluminium U-bracket / U-profile, natural anodised
Head rail	: aluminium, natural anodised

\*) Other heights possible upon request.

## HerboKern Solid KIDZ

Doors	: rebated
Material	: 13 mm high pressure solid grade laminate
Hinges	: 2 stainless steel AISI-316 grade rising hinges
Door knob	: aluminium round knob exclusive locking assembly
Height cubicle fronts	: approx. 2000 mm*), with 180 mm free space above f.l.l.
Height doors and partitions	: approx. 1380 mm
Version	: including aluminium adjustable feet
Connection profile	: aluminium U-bracket / U-profile, natural anodised
Head rail	: aluminium, natural anodised



**Hermeta**  
P.O. Box 1017,  
4147 ZG Asperen  
1e Industrieweg 1,  
4147 CR Asperen, Nederland

e-mail: [info@hermeta.nl](mailto:info@hermeta.nl)  
internet: [www.hermeta.nl](http://www.hermeta.nl)

